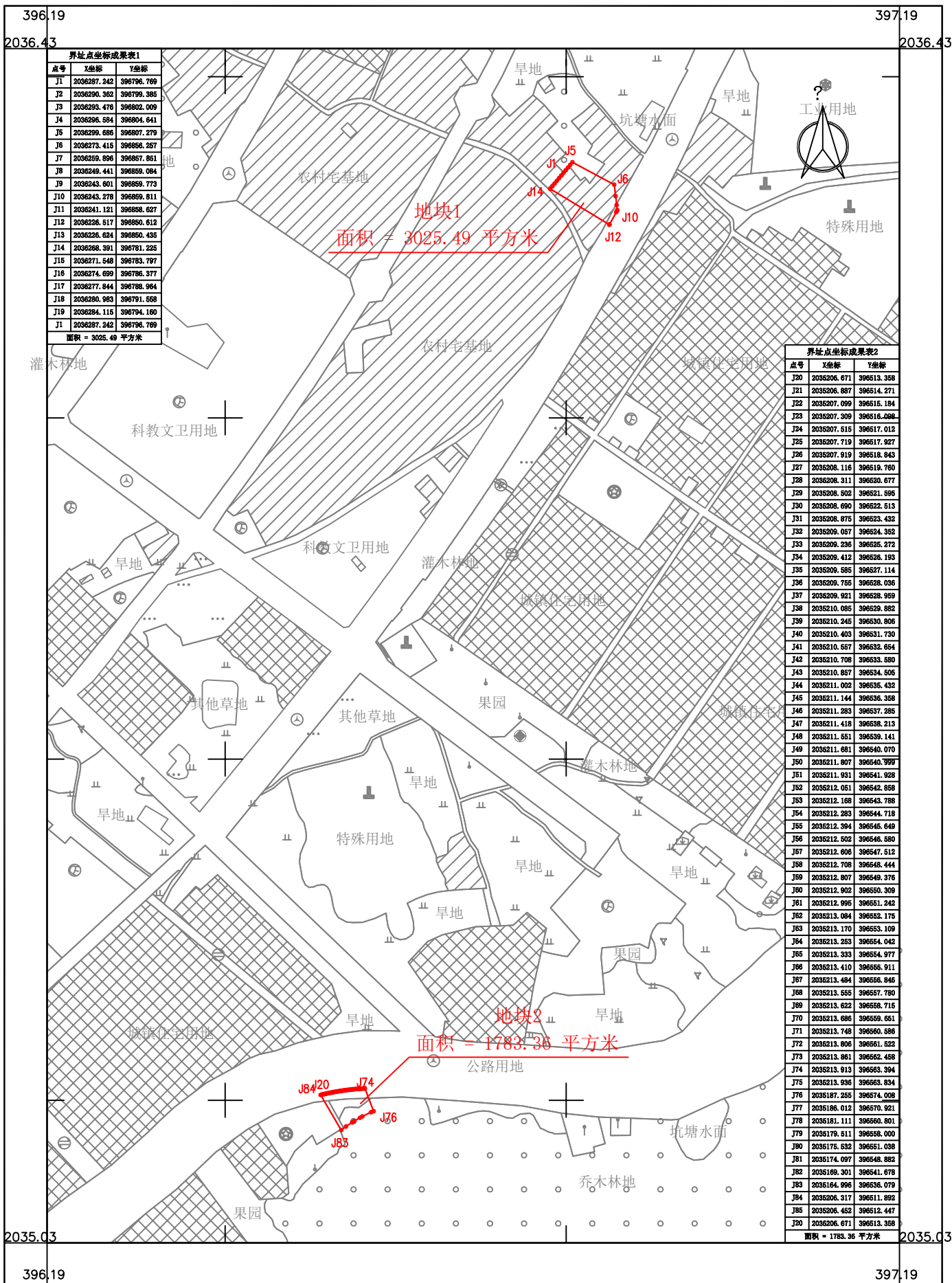


海南陵水黎安国际教育创新试验区公共交通运输枢纽建设项目用地勘测定界图

2035.03-396.19



界址点坐标成果表1		
点号	X坐标	Y坐标
J1	2036287.242	396796.789
J2	2036290.362	396799.385
J3	2036295.476	396802.009
J4	2036296.584	396804.641
J5	2036299.686	396807.279
J6	2036273.415	396856.257
J7	2036259.696	396867.851
J8	2036249.441	396869.064
J9	2036243.601	396869.773
J10	2036243.278	396869.811
J11	2036241.121	396868.627
J12	2036228.517	396860.612
J13	2036226.624	396860.435
J14	2036268.391	396781.225
J15	2036271.548	396783.787
J16	2036274.699	396786.377
J17	2036277.844	396788.964
J18	2036280.983	396791.558
J19	2036284.115	396794.160
J1	2036287.242	396796.789
面积 = 3025.49 平方米		

界址点坐标成果表2		
点号	X坐标	Y坐标
J20	2035206.671	396513.358
J21	2035206.887	396514.271
J22	2035207.099	396515.184
J23	2035207.309	396516.098
J24	2035207.515	396517.012
J25	2035207.719	396517.927
J26	2035207.919	396518.843
J27	2035208.116	396519.760
J28	2035208.311	396520.677
J29	2035208.502	396521.595
J30	2035208.690	396522.513
J31	2035208.875	396523.432
J32	2035209.057	396524.352
J33	2035209.236	396525.272
J34	2035209.412	396526.193
J35	2035209.585	396527.114
J36	2035209.756	396528.036
J37	2035209.921	396528.959
J38	2035210.085	396529.882
J39	2035210.245	396530.806
J40	2035210.403	396531.730
J41	2035210.557	396532.654
J42	2035210.708	396533.580
J43	2035210.857	396534.506
J44	2035211.002	396535.432
J45	2035211.144	396536.358
J46	2035211.283	396537.285
J47	2035211.418	396538.213
J48	2035211.551	396539.141
J49	2035211.681	396540.070
J50	2035211.807	396540.999
J51	2035211.931	396541.928
J52	2035212.051	396542.858
J53	2035212.168	396543.788
J54	2035212.283	396544.718
J55	2035212.394	396545.649
J56	2035212.502	396546.580
J57	2035212.606	396547.512
J58	2035212.708	396548.444
J59	2035212.807	396549.376
J60	2035212.902	396550.309
J61	2035212.995	396551.242
J62	2035213.084	396552.175
J63	2035213.170	396553.109
J64	2035213.253	396554.042
J65	2035213.333	396554.977
J66	2035213.410	396555.911
J67	2035213.484	396556.846
J68	2035213.555	396557.780
J69	2035213.622	396558.715
J70	2035213.686	396559.651
J71	2035213.748	396560.586
J72	2035213.806	396561.522
J73	2035213.861	396562.458
J74	2035213.913	396563.394
J75	2035213.966	396564.334
J76	2035187.255	396574.008
J77	2035186.012	396570.921
J78	2035181.111	396560.801
J79	2035179.511	396558.000
J80	2035175.632	396551.038
J81	2035174.097	396548.882
J82	2035169.301	396541.678
J83	2035164.996	396536.079
J84	2035206.317	396511.892
J85	2035206.452	396512.447
J20	2035206.671	396513.358
面积 = 1783.36 平方米		

海南国源土地矿产勘测规划设计院有限公司

2024年06月数字化测图
2000国家大地坐标系
1985国家高程基准

1:2000