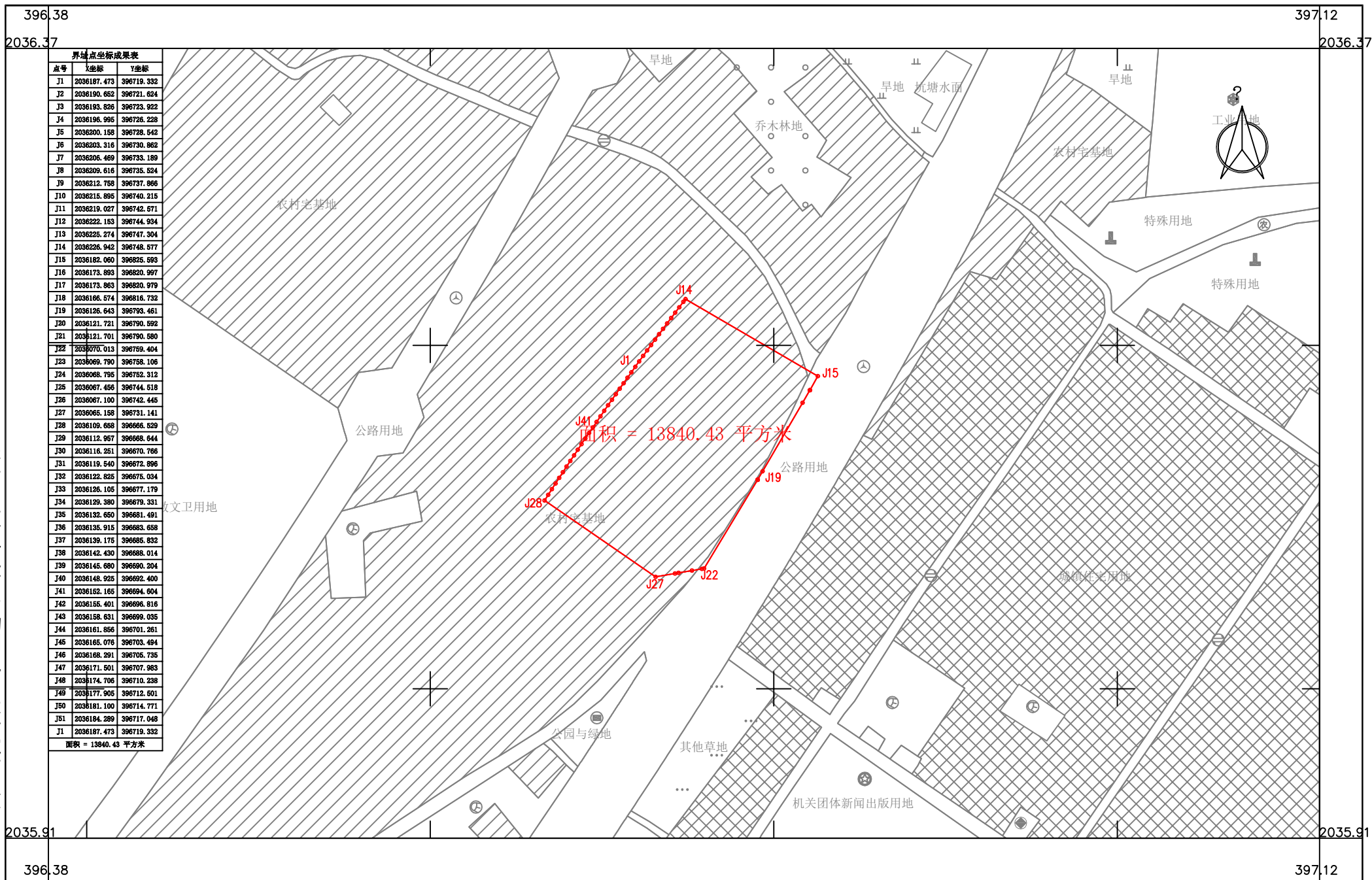


# 海南陵水黎安国际教育创新试验区产教融合中心（一期）项目用地勘测定界图

2035.91-396.38



界址点坐标成果表

点号	X坐标	Y坐标
J1	2036187.473	396719.332
J2	2036190.652	396721.624
J3	2036193.826	396723.922
J4	2036196.995	396726.228
J5	2036200.158	396728.542
J6	2036203.316	396730.862
J7	2036206.469	396733.189
J8	2036209.616	396735.524
J9	2036212.758	396737.866
J10	2036215.895	396740.215
J11	2036219.027	396742.571
J12	2036222.153	396744.934
J13	2036225.274	396747.304
J14	2036228.392	396749.677
J15	2036182.060	396825.593
J16	2036173.893	396820.997
J17	2036173.863	396820.979
J18	2036166.574	396816.732
J19	2036126.643	396793.461
J20	2036121.721	396790.592
J21	2036121.701	396790.580
J22	2036070.013	396759.404
J23	2036069.790	396758.106
J24	2036068.795	396752.312
J25	2036067.456	396744.518
J26	2036067.100	396742.445
J27	2036065.158	396731.141
J28	2036109.658	396666.529
J29	2036112.957	396668.644
J30	2036116.251	396670.766
J31	2036119.540	396672.896
J32	2036122.826	396675.034
J33	2036126.105	396677.179
J34	2036129.380	396679.331
J35	2036132.650	396681.491
J36	2036135.915	396683.658
J37	2036139.175	396685.832
J38	2036142.430	396688.014
J39	2036145.680	396690.204
J40	2036148.925	396692.400
J41	2036152.165	396694.604
J42	2036155.401	396696.816
J43	2036158.631	396699.035
J44	2036161.856	396701.261
J45	2036165.076	396703.494
J46	2036168.291	396705.735
J47	2036171.501	396707.983
J48	2036174.706	396710.238
J49	2036177.905	396712.501
J50	2036181.100	396714.771
J51	2036184.289	396717.048
J1	2036187.473	396719.332

面积 = 13840.43 平方米

海南国源土地矿产勘测规划设计院有限公司

2024年06月数字化测图  
2000国家大地坐标系  
1985国家高程基准

1:2000