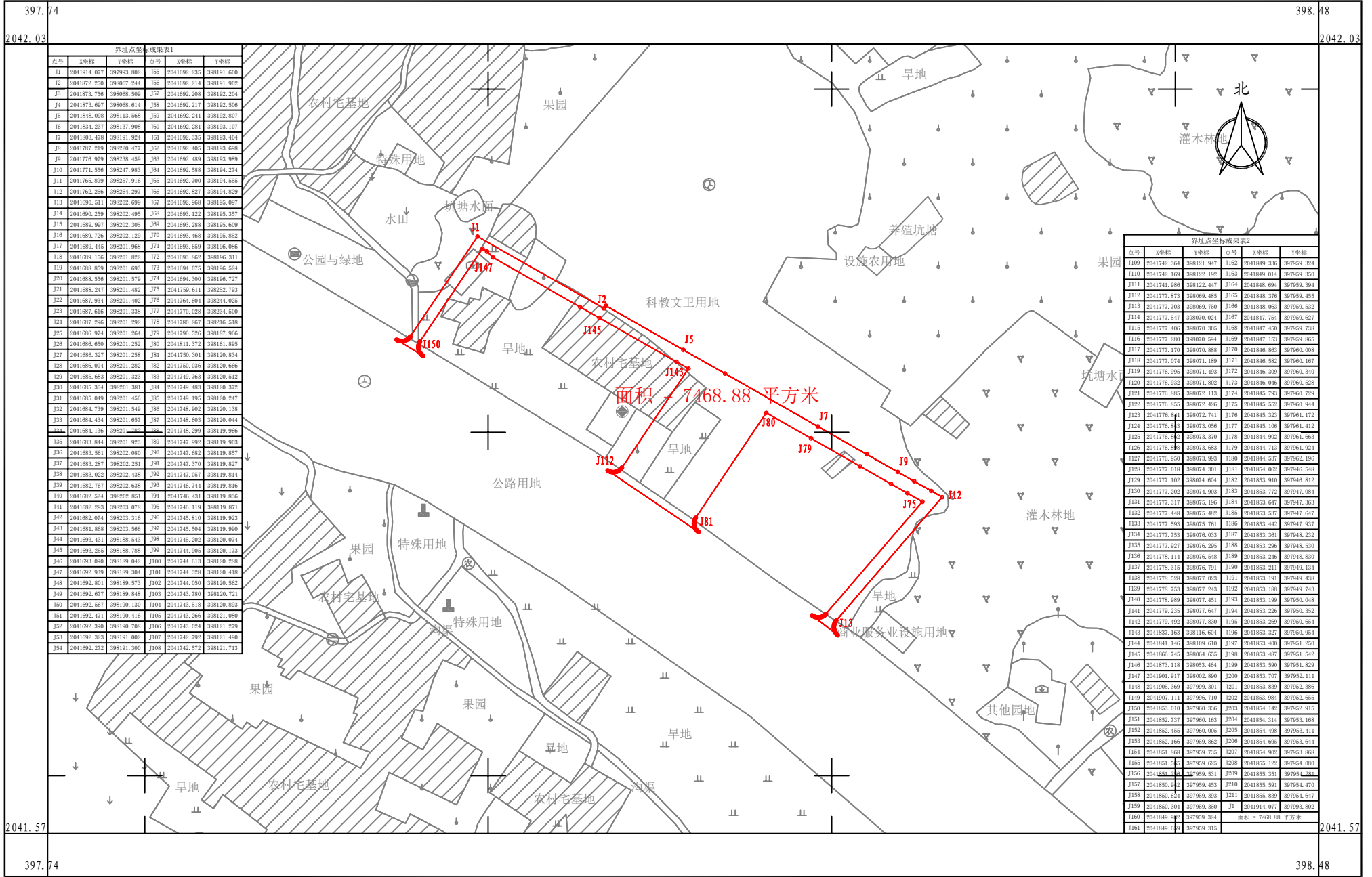


陵水县人民医院新院区道路项目用地勘测定界图

2041.57-397.74



界址点坐标成果表2					
点号	X坐标	Y坐标	点号	X坐标	Y坐标
J109	2041742.364	398121.947	J162	2041849.336	397959.324
J110	2041742.169	398122.192	J163	2041849.014	397959.350
J111	2041741.986	398122.447	J164	2041848.694	397959.394
J112	2041777.873	398069.485	J165	2041848.376	397959.455
J113	2041777.703	398069.750	J166	2041848.062	397959.522
J114	2041777.547	398070.024	J167	2041847.754	397959.627
J115	2041777.406	398070.305	J168	2041847.450	397959.728
J116	2041777.280	398070.594	J169	2041847.152	397959.865
J117	2041777.170	398070.894	J170	2041846.862	397960.008
J118	2041777.074	398071.199	J171	2041846.582	397960.167
J119	2041776.995	398071.503	J172	2041846.309	397960.340
J120	2041776.932	398071.802	J173	2041846.046	397960.528
J121	2041776.883	398072.113	J174	2041845.795	397960.729
J122	2041776.853	398072.426	J175	2041845.552	397960.944
J123	2041776.841	398072.741	J176	2041845.322	397961.172
J124	2041776.843	398073.056	J177	2041845.106	397961.412
J125	2041776.857	398073.370	J178	2041844.902	397961.663
J126	2041776.886	398073.683	J179	2041844.713	397961.924
J127	2041776.930	398073.990	J180	2041844.537	397962.196
J128	2041777.018	398074.301	J181	2041844.362	397962.548
J129	2041777.102	398074.604	J182	2041843.910	397962.812
J130	2041777.202	398074.903	J183	2041843.772	397963.084
J131	2041777.317	398075.196	J184	2041843.647	397963.363
J132	2041777.448	398075.482	J185	2041843.537	397963.647
J133	2041777.593	398075.761	J186	2041843.442	397963.937
J134	2041777.753	398076.033	J187	2041843.361	397964.232
J135	2041777.927	398076.296	J188	2041843.296	397964.530
J136	2041778.114	398076.548	J189	2041843.246	397964.830
J137	2041778.315	398076.791	J190	2041843.211	397965.134
J138	2041778.528	398077.023	J191	2041843.191	397965.438
J139	2041778.753	398077.243	J192	2041843.188	397965.743
J140	2041778.989	398077.451	J193	2041843.199	397966.048
J141	2041779.235	398077.647	J194	2041843.226	397966.352
J142	2041779.492	398077.830	J195	2041843.269	397966.654
J143	2041837.163	398116.604	J196	2041843.327	397966.954
J144	2041841.146	398109.610	J197	2041843.400	397967.250
J145	2041866.745	398064.655	J198	2041843.487	397967.542
J146	2041873.118	398063.464	J199	2041843.590	397967.829
J147	2041901.917	398002.890	J200	2041843.707	397968.111
J148	2041903.369	397999.301	J201	2041843.839	397968.386
J149	2041907.111	397996.710	J202	2041843.981	397968.655
J150	2041853.010	397960.336	J203	2041844.142	397968.915
J151	2041852.737	397960.163	J204	2041844.314	397969.168
J152	2041852.455	397960.005	J205	2041844.498	397969.411
J153	2041852.166	397959.862	J206	2041844.695	397969.644
J154	2041851.868	397959.735	J207	2041844.902	397969.868
J155	2041851.545	397959.625	J208	2041845.122	397970.080
J156	2041851.200	397959.531	J209	2041845.351	397970.284
J157	2041850.942	397959.453	J210	2041845.591	397970.470
J158	2041850.654	397959.393	J211	2041845.839	397970.647
J159	2041850.304	397959.350	J1	2041914.077	397993.802
J160	2041849.942	397959.324			
J161	2041849.649	397959.315			

海南国源土地矿产勘测规划设计院有限公司

2024年04月数字化测图
2000国家大地坐标系
1985国家高程基准

1:2000