

# 陵水县新光坡卫生院建设项目用地勘测界定图

398.99

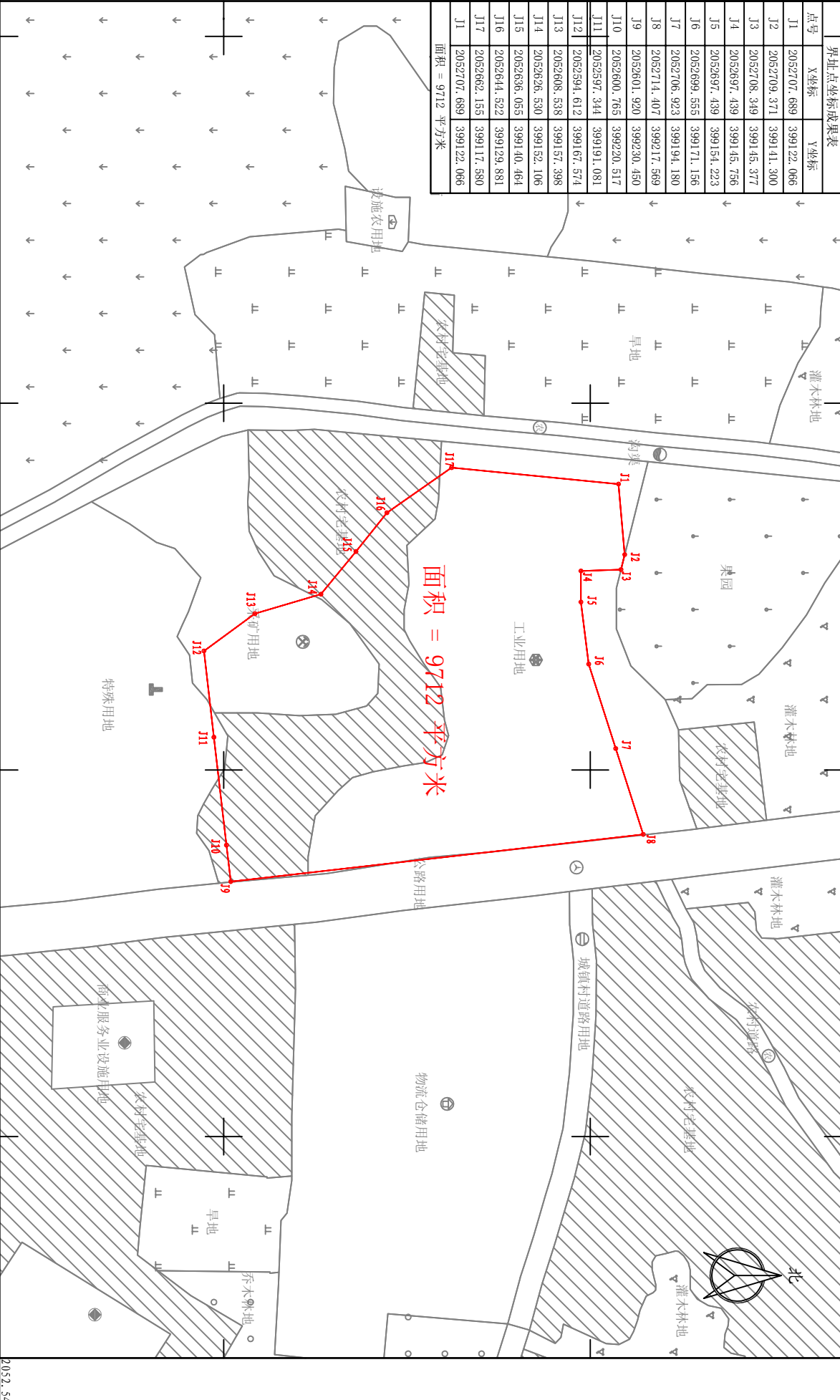
399.36

2052.77

2052.77

界址点坐标成果表		
点号	X坐标	Y坐标
J1	2052707.689	399122.066
J2	2052709.371	399141.300
J3	2052708.349	399145.377
J4	2052697.439	399145.756
J5	2052697.439	399154.223
J6	2052689.555	399171.156
J7	2052706.923	399194.180
J8	2052714.407	399217.569
J9	2052601.920	399230.450
J10	2052600.765	399220.517
J11	2052597.344	399191.081
J12	2052594.612	399167.574
J13	2052608.538	399157.398
J14	2052626.530	399152.106
J15	2052636.055	399140.464
J16	2052644.522	399129.881
J17	2052662.155	399117.580
J1	2052707.689	399122.066

面积 = 9712 平方米



海南国源土地矿产勘测规划设计院

398.99

399.36

2052.54

2052.54

2023年07月数字化测图  
2000国家大地坐标系  
1985国家高程基准

1:1000