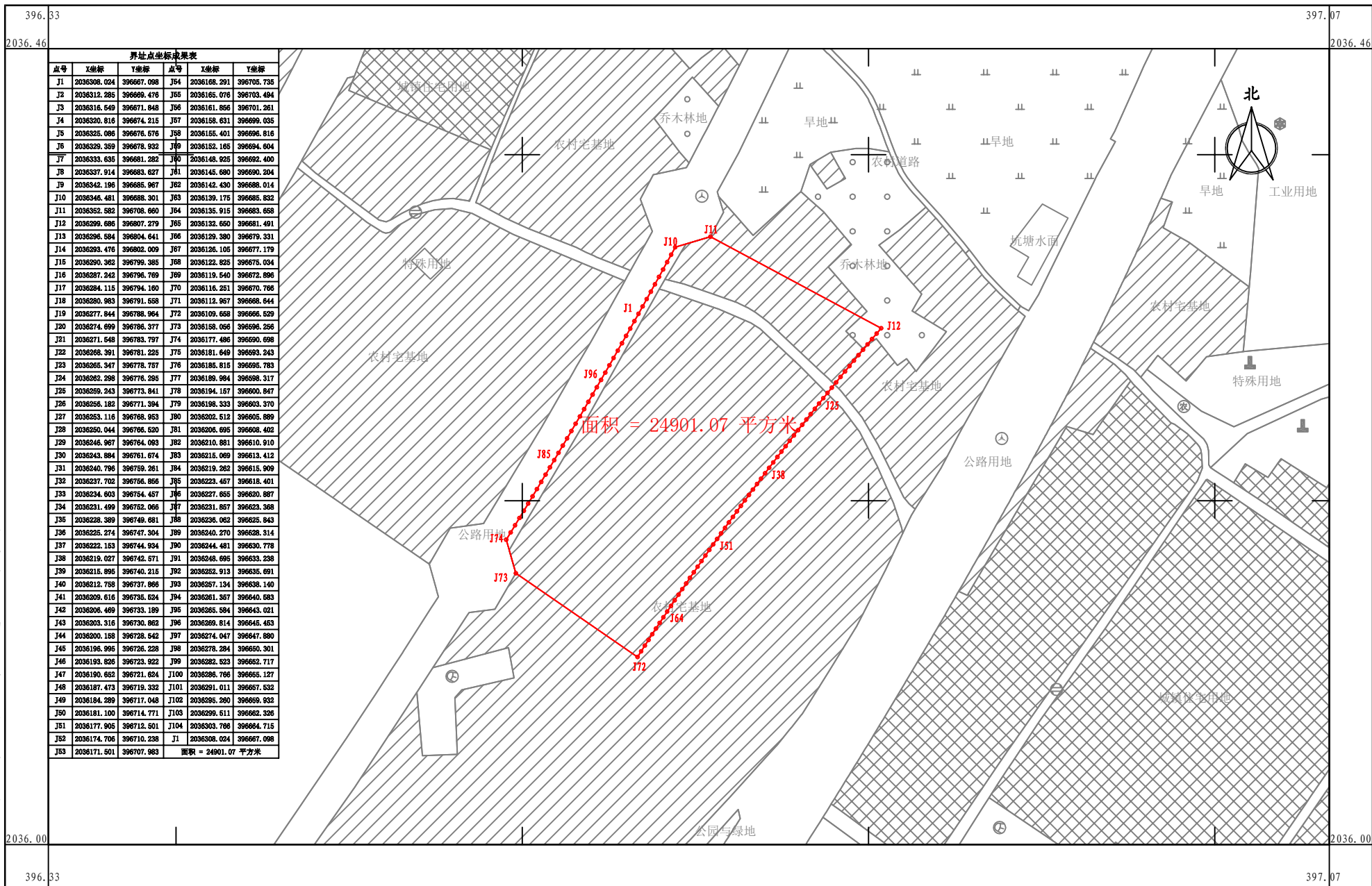


海南陵水黎安国际教育创新试验区综合服务中心项目用地勘测定界图

2036.00-396.33



界址点坐标成果表					
点号	X坐标	Y坐标	点号	X坐标	Y坐标
J1	2036308.024	396667.098	J54	2036168.291	396705.738
J2	2036312.285	396669.476	J55	2036165.076	396703.484
J3	2036316.649	396671.848	J56	2036161.866	396701.261
J4	2036320.816	396674.215	J57	2036158.631	396699.035
J5	2036325.086	396676.576	J58	2036155.401	396696.816
J6	2036329.359	396678.932	J59	2036152.165	396694.604
J7	2036333.635	396681.282	J60	2036148.925	396692.400
J8	2036337.914	396683.627	J61	2036145.680	396690.204
J9	2036342.196	396685.967	J62	2036142.430	396688.014
J10	2036346.481	396688.301	J63	2036139.175	396685.822
J11	2036352.582	396708.660	J64	2036135.915	396683.658
J12	2036359.686	396807.279	J65	2036132.650	396681.491
J13	2036356.584	396804.641	J66	2036129.380	396679.331
J14	2036353.476	396802.009	J67	2036126.105	396677.179
J15	2036350.362	396799.385	J68	2036122.825	396675.034
J16	2036287.242	396796.769	J69	2036119.540	396672.896
J17	2036284.115	396794.160	J70	2036116.251	396670.766
J18	2036280.983	396791.558	J71	2036112.967	396668.644
J19	2036277.844	396788.964	J72	2036109.688	396666.529
J20	2036274.699	396786.377	J73	2036106.406	396664.426
J21	2036271.548	396783.797	J74	2036103.121	396662.333
J22	2036268.391	396781.225	J75	2036099.831	396660.243
J23	2036265.247	396778.657	J76	2036096.541	396658.158
J24	2036262.098	396776.095	J77	2036093.251	396656.077
J25	2036259.243	396773.541	J78	2036089.964	396654.000
J26	2036256.182	396771.394	J79	2036086.678	396652.000
J27	2036253.116	396768.953	J80	2036083.392	396650.000
J28	2036250.044	396766.520	J81	2036080.106	396648.000
J29	2036246.967	396764.083	J82	2036076.820	396646.000
J30	2036243.884	396761.674	J83	2036073.534	396644.000
J31	2036240.796	396759.261	J84	2036070.248	396642.000
J32	2036237.702	396756.866	J85	2036066.962	396640.000
J33	2036234.603	396754.457	J86	2036063.676	396638.000
J34	2036231.499	396752.066	J87	2036060.390	396636.000
J35	2036228.389	396749.681	J88	2036057.104	396634.000
J36	2036225.274	396747.304	J89	2036053.818	396632.000
J37	2036222.153	396744.934	J90	2036050.532	396630.000
J38	2036219.027	396742.571	J91	2036047.246	396628.000
J39	2036215.895	396740.215	J92	2036043.960	396626.000
J40	2036212.758	396737.866	J93	2036040.674	396624.000
J41	2036209.616	396735.524	J94	2036037.388	396622.000
J42	2036206.489	396733.189	J95	2036034.102	396620.000
J43	2036203.316	396730.862	J96	2036030.816	396618.000
J44	2036200.158	396728.542	J97	2036027.530	396616.000
J45	2036196.996	396726.228	J98	2036024.244	396614.000
J46	2036193.826	396723.922	J99	2036020.958	396612.000
J47	2036190.652	396721.624	J100	2036017.672	396610.000
J48	2036187.473	396719.322	J101	2036014.386	396608.000
J49	2036184.289	396717.040	J102	2036011.100	396606.000
J50	2036181.100	396714.771	J103	2036007.814	396604.000
J51	2036177.905	396712.501	J104	2036004.528	396602.000
J52	2036174.706	396710.238	J1	2036001.242	396600.000
J53	2036171.501	396707.983			

面积 = 24901.07 平方米

海南国土矿产勘测规划设计院有限公司

2024年07月数字化测图
2000国家大地坐标系
1985国家高程基准

1:2000