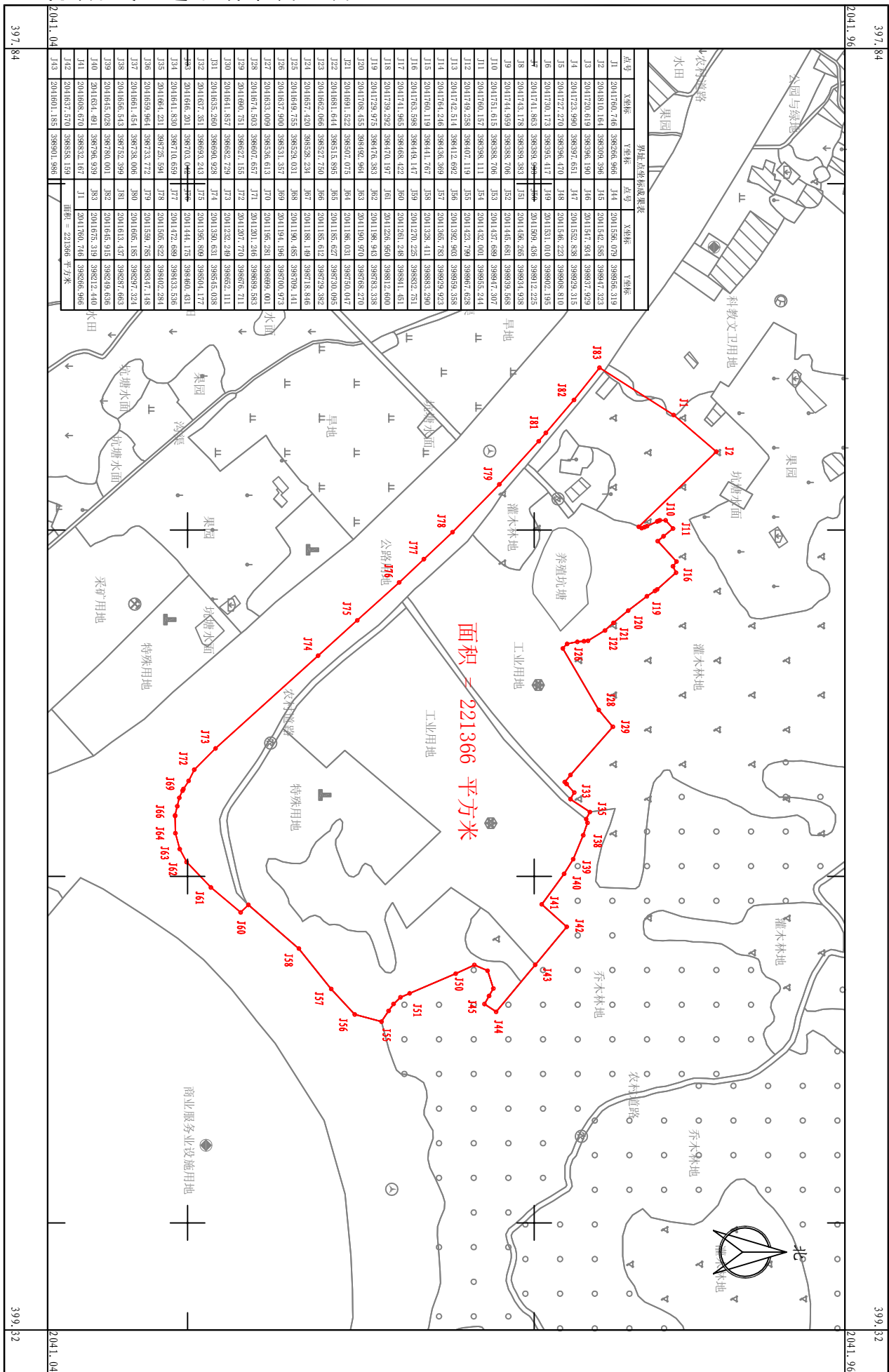


# 陵水县I S2023-13号用地勘测测定界图

2041.04-397.84



点号	X98坐标	Y98坐标	点号	X98坐标	Y98坐标
J1	2041676.746	398296.966	J14	2041536.073	398956.319
J2	2041810.184	398308.396	J15	2041542.585	398974.323
J3	2041726.619	398396.190	J16	2041847.604	398937.939
J4	2041723.990	398397.651	J17	2041562.838	398929.315
J5	2041727.270	398396.470	J18	2041546.221	398902.185
J6	2041728.173	398395.417	J19	2041531.010	398902.185
J7	2041741.803	398393.944	J20	2041509.436	398912.225
J8	2041743.178	398389.383	J21	2041526.265	398934.938
J9	2041744.959	398388.706	J22	2041465.681	398939.568
J10	2041751.615	398388.706	J23	2041457.689	398947.307
J11	2041760.157	398398.111	J24	2041422.000	398955.244
J12	2041749.235	398407.149	J25	2041423.798	398961.628
J13	2041742.514	398412.692	J26	2041392.963	398959.338
J14	2041764.246	398426.389	J27	2041395.788	398929.923
J15	2041766.119	398441.767	J28	2041328.411	398932.290
J16	2041763.586	398449.147	J29	2041270.225	398932.751
J17	2041741.985	398468.422	J30	2041291.246	398941.463
J18	2041728.292	398470.197	J31	2041226.500	398912.600
J19	2041729.975	398476.388	J32	2041198.943	398978.338
J20	2041708.455	398482.964	J33	2041190.970	398978.270
J21	2041691.522	398502.075	J34	2041198.031	398970.047
J22	2041681.641	398515.595	J35	2041185.627	398972.085
J23	2041682.006	398527.730	J36	2041185.612	398972.382
J24	2041674.420	398528.234	J37	2041188.149	398978.846
J25	2041649.755	398529.031	J38	2041190.485	398979.141
J26	2041637.900	398531.357	J39	2041194.196	398970.047
J27	2041633.009	398526.613	J40	2041195.238	398969.400
J28	2041674.503	398607.657	J41	2041201.216	398965.583
J29	2041690.751	398627.155	J42	2041207.770	398974.711
J30	2041641.857	398682.729	J43	2041232.249	398965.111
J31	2041635.200	398690.928	J44	2041150.631	398945.028
J32	2041637.351	398693.243	J45	2041195.880	398964.177
J33	2041646.200	398700.659	J46	2041144.175	398960.436
J34	2041641.830	398710.659	J47	2041472.689	398933.536
J35	2041661.231	398725.594	J48	2041505.822	398942.284
J36	2041659.961	398723.772	J49	2041559.785	398941.148
J37	2041661.451	398728.006	J50	2041601.183	398937.324
J38	2041668.513	398732.399	J51	2041613.432	398937.663
J39	2041615.028	398790.001	J52	2041615.915	398929.636
J40	2041634.491	398796.939	J53	2041675.319	398924.440
J41	2041608.670	398822.167	J1	2041760.746	398956.966
J42	2041637.570	398838.139			
J43	2041601.155	398901.586			

海南国源土地矿产勘测规划设计院

2023年11月数字化测图  
2000国家大地坐标系  
1985国家高程基准

1:2000